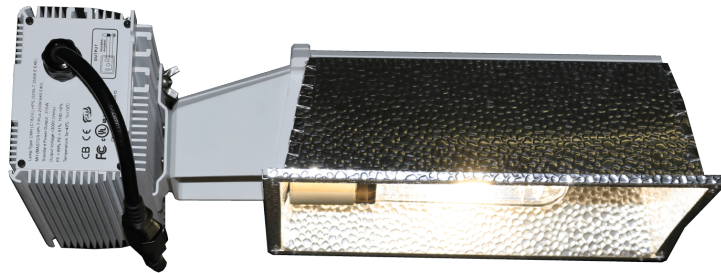


MIGRO

www.migrolight.com

By Partech LED Ltd

Instruction manual and datasheet



MIGRO Economy 315W

Ceramic Metal Halide Grow Light

Caution

- Turn off and unplug the Light fixture when installing or replacing bulb
- Allow the bulb to cool before handling
- Do not touch the bulb with bare hands as this may damage the bulb
- Use a clean cloth or gloves to handle the bulb
- Keep liquids and combustible materials away from the lamp
- Do not use excessive force when installing lamp
- Lamp may shatter and cause injury or fire
- If the outer envelope of the bulb is broken do not use as Ultra violet radiation will be emitted

315W CMH Economy

The MIGRO 315W CMH Economy is a complete grow light fixture combining the ballast, reflector and bulb in one. For growers on a budget who want the best spectrum for lush plant growth and a high quality yield.

Quick Start

Remove the light fixture from the packaging.

Using protective gloves insert the bulb into the light fixture.

Hang the fixture in position and clear the area around and above the fixture.

Check all cables are secured.

Switch on the light at the socket

Wait 5 minutes for the light to power up fully

Specifications:

Flowering coverage: Up to 90cm x 90cm (3ft x 3ft)

Power consumed: 340watts

Bulb included: MIGRO 3.3K Agro

Total PPF: 445 $\mu\text{mol}/\text{m}^2/\text{sec}$

Efficiency PPF/Watt: 1.3 $\mu\text{mol}/\text{watt}$

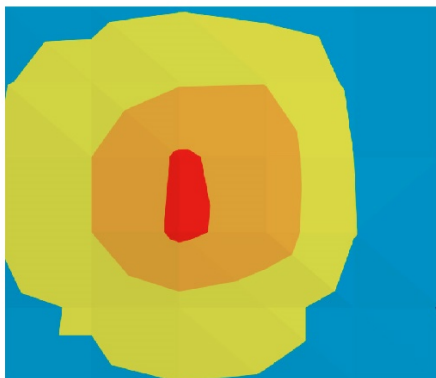
Spectrum: Full spectrum (veg to flower)

Lifetime: 20,000 hours (80% original output)

Safety: ETL and UL listed

Safety: Short circuit/Circuit overheat & Lamp failure protection

MIGRO 315W CMH Economy PAR intensity map

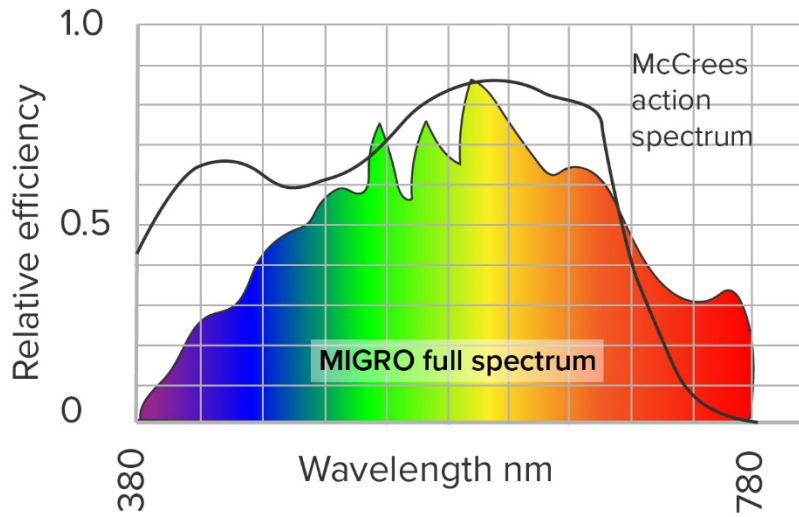


Key ($\mu\text{mol}/\text{m}^2/\text{sec}$)	
Too high	1000 to 1500
High Growth	750 to 1000
Medium growth	500 to 750
Low growth	250 to 500
No growth	0 to 250

Coverage: 90cm x 90cm

Hanging height: 30cm

MIGRO spectrum
Ceramic Metal Halide 4K Far Red



MIGRO spectrum
Ceramic Metal Halide 3.3K Agro

